

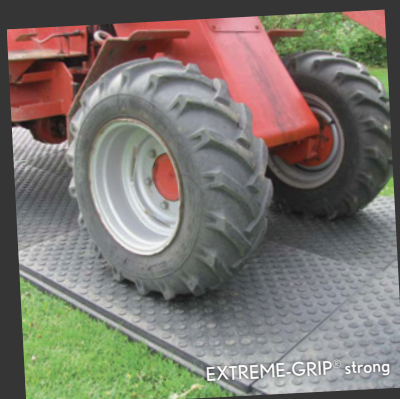
EXTREME-GRIP®

The ground protection for extremely heavy loads.

verreal
surface protect systems

As an easy to lay ground protection, EXTREME-GRIP® flooring systems allow for quick, temporary and/or flexible access to work areas and roadways. EXTREME-GRIP® ground protection systems are efficient and cost-effective.

EXTREME-GRIP® is available in three versions: light, strong and heavy. The different EXTREME-GRIP® products are selected depending on the requirements, application and level of loading. They minimise high recultivation costs and damage to property.





EXTREME-GRIP® light

EXTREME-GRIP® light is quick and easy to lay. Due to the circumferential rebate groove, the individual slabs are easy to interlock. The slabs are flame resistant and have high resistance to chemicals.

EXTREME-GRIP® light is particularly well-suited for:

- events, festivals, open-air concerts
- agriculture, industry
- stables
- access paths
- open areas at trade fairs
- production and warehouse halls

EXTREME-GRIP® strong

EXTREME-GRIP® strong is a heavy-duty, temporary ground protection. It can be driven on by trucks of up to 40 tons.

EXTREME-GRIP® strong is particularly well-suited for:

- mobile parking areas, manoeuvring areas
- agriculture, industry
- stables
- warehouses, logistics
- event areas
- lawn protection on large areas (stadiums)
- gardens, landscaping
- construction sites

EXTREME-GRIP® heavy

EXTREME-GRIP® heavy are large-size, non-slip and elastic terrain slabs for the heaviest equipment and work platforms. They are for both temporary and longer-term use. The slabs can be loaded up to 1000 to/m².

EXTREME-GRIP® heavy is particularly well-suited for:

- temporary access roads for heavy and very heavy equipment (mobile cranes)
- work platforms for drilling, construction and materials handling
- temporary parking areas and access roads
- construction and renovation measures
- events

Technical specifications

	light	strong	heavy
Dimensions	800 x 600 x 22 mm	1200 x 800 x 43 mm / 800 x 600 x 43 mm	2.000 x 4.000 x 37 mm
Weight	11,5 kg	32 kg / 18 kg	330 kg
Material	PVC (recycled)	PVC (recycled)	Surface: PVC high density (12 mm) Bottom: PP (25 mm)
Loading	up to 2 tons/dm ²	up to 2,2 tons/dm ²	up to 1.000 tons/dm ²
Fire class	B1 (hardly inflammable) according to DIN 4102	B1 (hardly inflammable) according to DIN 4102	B1 (hardly inflammable) according to DIN 4102
Surface structure	stone look	coin profile	coin profile
Bottom structure	backing star	backing rings	backing rings

verael is the exclusive distributor for LOGIS products in France and Benelux. For further information, please contact:

verael S.A. | Tel.: (+352) 26 12 99 | info@surface-protect.eu | www.surface-protect.eu

